

complite

poly floor



New generation one-piece
seamless caravan and RV
flooring solution

Exclusive to Worthington Caravan & RV

New Generation Caravan and RV Flooring

Complite Poly Floor is manufactured using an advanced composite material that delivers unprecedented features and benefits to caravan and RV manufacturers and ultimately, your customers. One-piece Complite Poly Floor panels are lighter yet tougher than 12mm plywood and can withstand even greater exposure to the elements. Complite Poly Floor will endure the toughest, hottest and wettest on and off-road conditions.

Difference for Manufacturers

Complite Poly Floor delivers a new generation of must-have features in today's performance caravans and RV's, and provides a range of value-added benefits:

- **Super lightweight:** up to 40% lighter than standard plywood
- **Quick installation:** reduce time during manufacturing
- **Impervious to the elements:** unaffected by salt, water and other corrosives
- **Fewer fixings:** save money on componentry
- **Can be scored or routed:** easily achieve angles and curves
- **Easily processed:** compatible with standard woodworking tools
- **Reliable for longer:** will never delaminate
- **Consistent weight:** weight is predictable and consistent
- **Enhances showroom appeal:** clean, modern appearance to increase sales conversions
- **Competitive differentiation:** additional selling point for your dealers

Benefits for Your End Customers

Your customers will appreciate a floor that is easier to maintain, more durable and delivers a lighter van. Complite Poly Floor lasts longer and helps caravans and RV's maintain a higher value over their life span.

- **Lightweight:** lighter to tow; reduced fuel consumption
- **Improved quality and durability:** delivering a longer lasting van, with better resale value
- **Impact resistant:** reduced risk of damage
- **New look and feel:** new generation composite for better performance and long-term value
- **Seamless construction:** no joins means no squeaking, creaking, sagging, lifting, bubbling or tearing
- **Impervious to water:** unaffected by salt, water and other elements
- **Easy to maintain:** smooth surface can be easily cleaned with conventional methods
- **Environmentally friendly:** kind to the environment, the floor can be either re-used or recycled

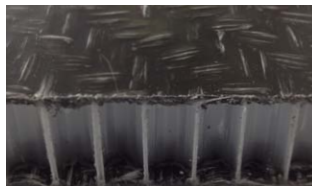
Complite Poly Floor Advanced Construction

Complite Poly Floor is made from a thermoplastic composite sandwich panel consisting of polypropylene-honeycomb and fibre-glass reinforced polypropylene face sheets. They are joined together by a unique welding lamination process that creates an almost indestructible material. An additional polypropylene layer on the outside gives a smooth surface and delivers a sleek and attractive look. Complite Poly Floor is exclusive to Worthington Caravan & RV.

Advanced Composite Structure



Available in natural or black



Polypropylene sheet

Gives a smooth finish

Woven pp / fibre-glass

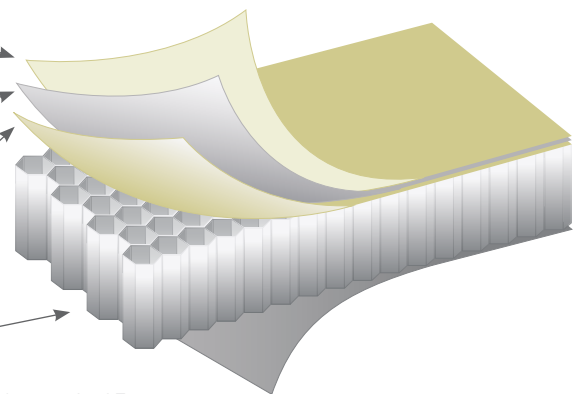
Reinforcement

Polypropylene sheet

Welded to honeycomb

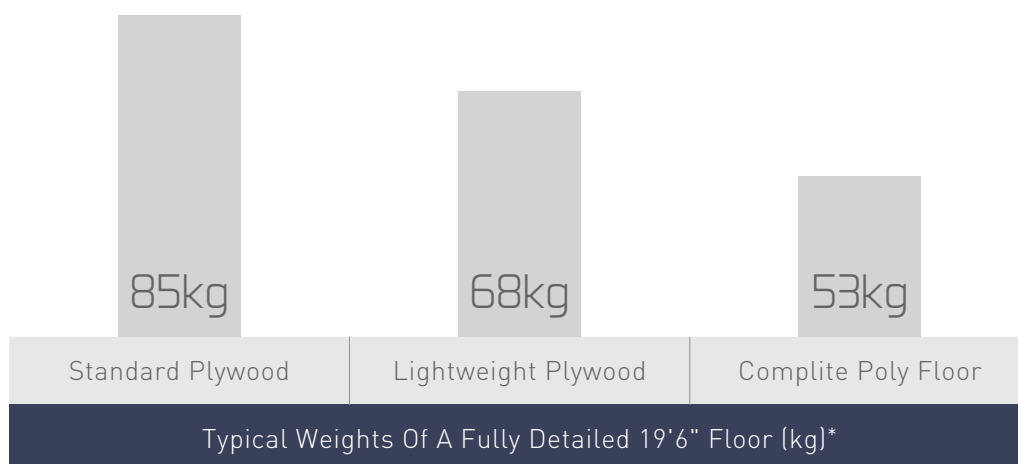
Polypropylene honeycomb

Complite Poly Floor standard thickness is 17mm.
Other thicknesses available on request.



Weight Properties

Based on a fully-detailed 19'6" floor, Complite Poly Floor weighs approximately 32kg less than traditional 12mm plywood floors.



*Based on 2286mm width and 1600x300mm wheel box cut outs

Customisable Solutions

Worthington Caravan & RV can customise Complite Poly Floor to your specific size and shape requirements. Complite Poly Floor is also available in either black or white to complement the unique design of your caravans and RVs.

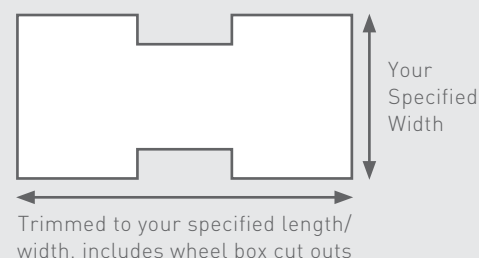
Untrimmed



Trimmed To Specified Width



Fully Detailed



Technical Support to Help You Evolve and Grow

Worthington Caravan & RV understands that adopting Complite Poly Floor may involve a review of your current manufacturing methods. We have undertaken extensive testing of processes and methods for assembly to chassis and cabinets. To provide you with assistance through this process we have a dedicated technical support team of engineers who will work with you to streamline the construction of caravans and RVs that feature Complite Poly Floor.

Note: although we may provide guidance in assembly processes involving Complite Poly Floor, van designs and fixing requirements may vary. Therefore manufacturers should conduct their own testing to ensure fixing methods are suitable for their particular application.

Worthington Caravan & RV

A division of Worthington Industries, Worthington Caravan & RV is the leading innovator of plywood and composite panel solutions. Founded in 1975 and servicing the caravan and RV industry for over 20 years, Worthington Caravan & RV is the trusted name in plywood and composite solutions with a reputation for delivering superior products, competitive prices and exceptional customer service. For further information on Complite Poly Floor or other composite panel solutions, please contact our team.



complite
poly floor

15 Enterprise Way, Bayswater Victoria 3153
Phone: (03) 9729 1277 Fax: (03) 9729 8664
enquiries@worthingtoncaravanandriv.com.au
www.worthingtoncaravanandriv.com.au